



**The Redeemer**

**Church of England Primary School**

Headteacher: Mr M Power

## Monthly Update - May 2026

Dear Parents/Carers,

Yet another very busy half term in school!

We are immensely proud of our Year 6 children, who approached their SATs last week with great maturity and determination. They also enjoyed a well-deserved trip to the Play Factice on Friday to celebrate the end of a week of assessments!

This week, weather permitting, we have our Sports Days to look forward to, as well as a non-uniform day on Friday before the May half-term holiday.



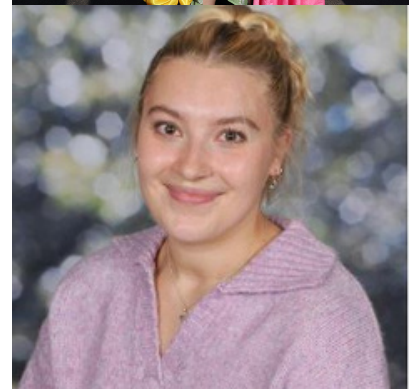
### Good Luck and Goodbye to Miss Sicily Taylor

It is with a heavy heart that we bid a fond farewell to Miss Taylor, who leaves us at the end of this half term to travel in Vietnam with her partner. Miss Taylor joined The Redeemer four years ago and has since worked in EYFS, Year 4 and Year 5. She has made fantastic contributions through her dance expertise in our whole-school productions, as well as training our gymnastics teams.

It has been an absolute pleasure having Miss Taylor as part of our Redeemer team, and we know that she will be sorely missed by both staff and children. We wish Miss Taylor all the very best during her adventures abroad and look forward to hearing about all that she has seen and done.

Yours sincerely,

Ms Sam Crofts



## Summer Term Key Dates

### May

#### **Wednesday 20th May**

- 09:30 – EYFS Sports Morning
- 13:30 – Year 1 & 2 Sports Afternoon

#### **Thursday 21st May**

- 09:30 – Year 3 & 4 Sports Morning
- 13:30 – Year 5 & 6 Sports Afternoon

#### **Friday 22nd May**

- Non-Uniform Day
- School Closes for Half Term

### June

#### **Tuesday 2nd June**

- School Reopens (Summer 2)
- Year 4 – Multiplication Tables Check (Fortnight begins)

#### **Monday 8th June & Tuesday 9<sup>th</sup> June**

Year 2 SATs Reading Paper

#### **Monday 8th June**

Year 1 – Phonics Screening Week

#### **Wednesday 10<sup>th</sup> June**

Year 2 SATs GPS Paper

#### **Thursday 11th June**

Year 1 (Class 4) – Bring Yer Wellies Trip

#### **Friday 12th June**

Year 1 (Class 3) – Bring Yer Wellies Trip

#### **Monday 15<sup>th</sup> June & Tuesday 16<sup>th</sup> June**

Year 2 SATs Maths Paper

#### **Wednesday 17th June**

Year 2 – Go Ape Trip

*Please note: all dates are subject to change.*

📞 01254 296400

📍 Jack Walker Way, Blackburn, BB2 4JJ

✉ [office@theredeemer.blackburn.sch.uk](mailto:office@theredeemer.blackburn.sch.uk)