



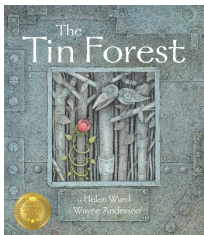
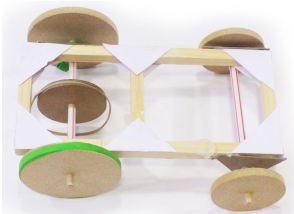

Year 3 Writing Overview



	Week 1	Week 2	Week 3	Week 4	Week 5	Week 6	Week 7	Week 8	Week 9	Week 10	Week 11	Week 12	Week 13	Week 14
A U T U M N	Fable: The Tin Forest				Instructions: Moving Cars				Biography: Mary Anning				CC: Christmas Story; Fable	
S P R I N G	Diary: The Lion, the Witch and the Wardrobe				CC: Fu Hao; biography	Action/Adventure: The Lion, the Witch and the Wardrobe				Poetry: The Magic Box				
S U M M E R	Myths: Greek Myths		CC: Plants; Instructions	Letters: Greek Myths				Detective: Kate on the Case			CC: Volcanoes; Recount	Poetry: The Sound Collector		



= Cross-Curricular Writing

A U T U M N	Fable	Instructions	Biography
			
	Features Story with a moral at the end	Features <ul style="list-style-type: none"> - Descriptive openers - Second Person - Extra information (time taken, serves who?/advice) 	Features <ul style="list-style-type: none"> - Opening paragraph - Closing statement for conclusion - Key events organised in paragraphs
	Grammar <ul style="list-style-type: none"> - Sentence types - Word Class - Main/subordinate clause 	Grammar <ul style="list-style-type: none"> - Prepositions - Conjunctions - Main/subordinate clause 	Grammar <ul style="list-style-type: none"> -Prepositions - Main/subordinate clause - Conjunctions
	Emerging Writes <ul style="list-style-type: none"> - Character description - Action sequence 	Emerging Writes <ul style="list-style-type: none"> - Using a range of adverbials - Precautionary/ friendly tips 	Emerging Writes <ul style="list-style-type: none"> -Grouping ideas together

S P R I N G	Diary	Action/Adventure	The Magic Box
			
	Features <ul style="list-style-type: none"> - Personal opinion - Clear introduction and conclusion - Quotations - Paragraphs to separate key events 	Features <p>Exciting story featuring exciting events and setting</p>	Features <p>Rhyme – sharing the same sound</p> <p>Alliteration – used to be memorable</p>
	Grammar <ul style="list-style-type: none"> - Word Class - Apostrophes - Conjunctions 	Grammar <ul style="list-style-type: none"> - Inverted Commas - Prepositions - Conjunctions 	Grammar <ul style="list-style-type: none"> - Word Class -
	Emerging Writes <ul style="list-style-type: none"> - Explaining feelings - Using quotations 	Emerging Writes <ul style="list-style-type: none"> - Character Description - Action Sequence 	Emerging Writes <ul style="list-style-type: none"> -

S

U

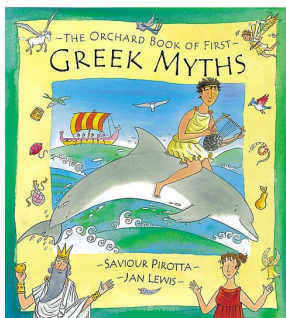
M

M

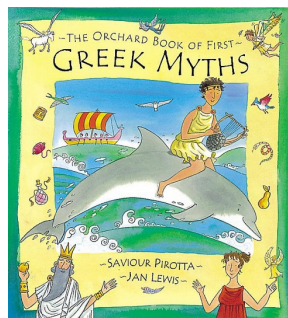
E

R

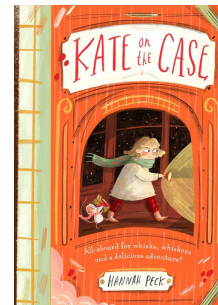
Myths



Letters



Detective



Poetry



Features

Stories involving mythical places and monsters

Features

- Your address
- Closing statement
- Opening paragraph (why you're writing)
- Paragraphs for change of subject

Features

Story with a mystery to solve

Features

- Repetition
- First person

Grammar

- Inverted Commas
- Main/subordinate Clause
- Conjunctions

Grammar

- Perfect verb form
- Prepositions
- Conjunction

Grammar

- Inverted Commas
- Main/Subordinate clause
- Prepositions

Grammar

- Word Class

Emerging Writes

- Setting description
- Character description
- Action sequence

Emerging Writes

- Emotive sentences
- Openings and closing paragraphs
- Formal/informal writing

Emerging Writes

- Character Description
- Setting Description

Emerging Writes

- Using specific vocabulary